

23 CHIME STAND ASSEMBLY INSTRUCTIONS

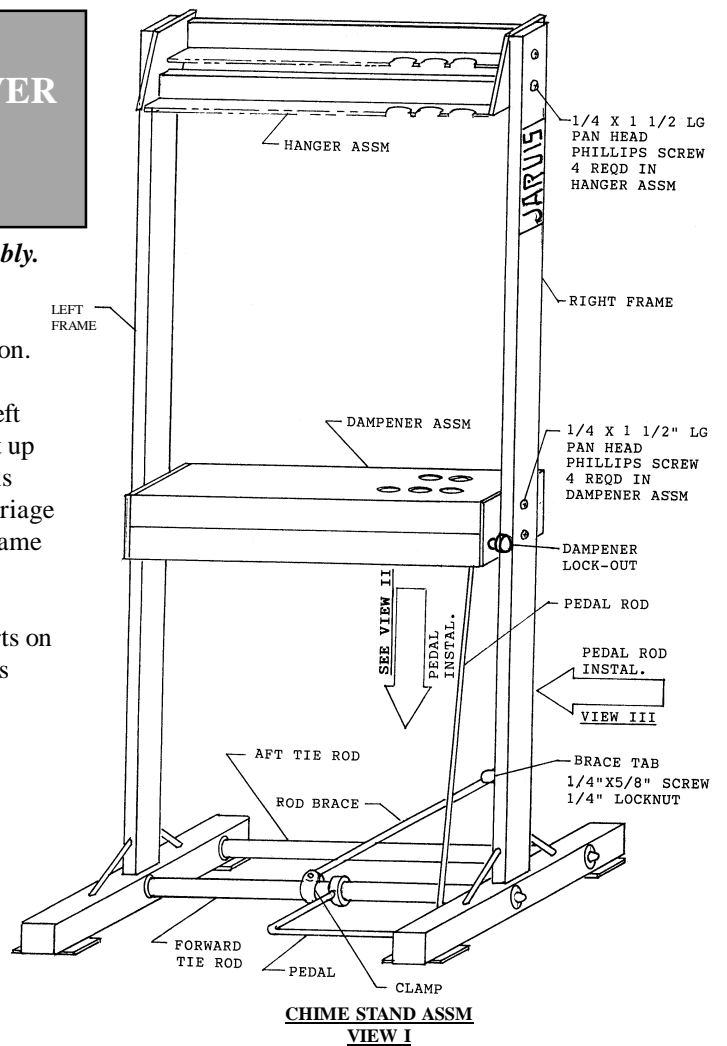
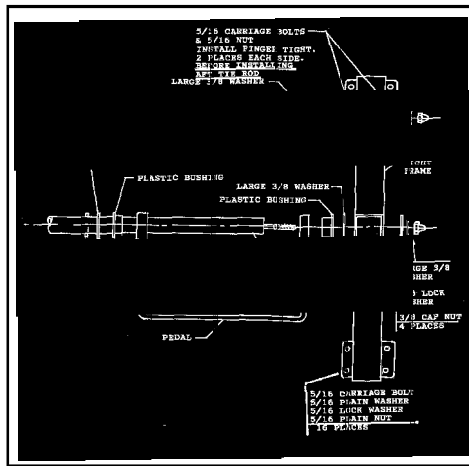
TOOLS REQUIRED

- #2 PHILLIPS SCREWDRIVER
- 1/2" WRENCH
- 7/16" WRENCH

*We recommend two people assist in the assembly.
Take care not to damage finish.*

See **VIEW I** for parts identification and orientation.

1. Install both tie rods and associated parts in left frame, tighten cap nuts-finger tight only. Set up frames as shown in **VIEW I**. If your frame is supplied with pneumatic tires, install two carriage bolts and 5/16 nuts in two wheel plates on frame (See **VIEW II**).
2. Install the pedal assembly and associated parts on forward tie rod. Tighten the four (4) cap nuts securely. See **VIEW II**.

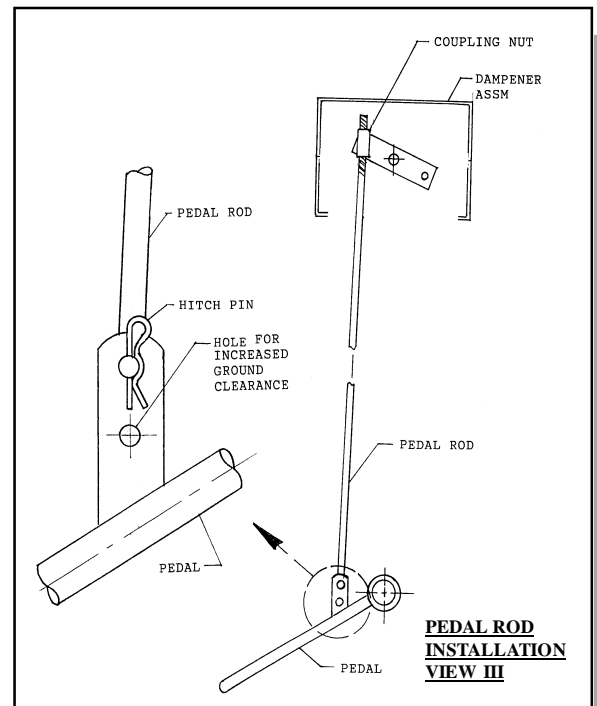


**CHIME STAND ASSM
VIEW I**

JL-JARVIS-
Marching Band Products
1-800-548-4239

3. Stand frame assembly upright on caster plates.
4. Install dampener assembly-(with the most chime holes on players' side).
5. Lay assembly on its back (pedal in up position). Screw pedal rod into either end of coupling nut. Continue to screw until rod extends out opposite end of coupling nut approx. 1".
6. Install pedal rod into top of pedal. Install hitch pin. See **VIEW III**.
7. Install the rod brace on the brace tab, install other end of rod into the clamp.
8. Install the four (4) caster wheels. Tighten nuts securely.
9. Set frame upright on the caster wheels. Adjust the height of the pedal by removing hitch pin and...

CONTINUED ON BACK



**PEDAL ROD
INSTALLATION
VIEW III**

CONTINUED FROM FRONT

...screwing the pedal rod "in" or "out".
Replace hitch pin. Pedal must depress far enough to allow chime lock-out to engage.

10. Depress foot pedal before installing each chime tube.
11. To engage chime dampener lock-out, push pedal all the way down & turn lock-out knob 90 degrees either direction. Let up on pedal, chime tubes will not be dampened. To disengage lock-out, push pedal down & pull out on plunger and rotate 90 degrees in either direction. Chime will then be dampened.

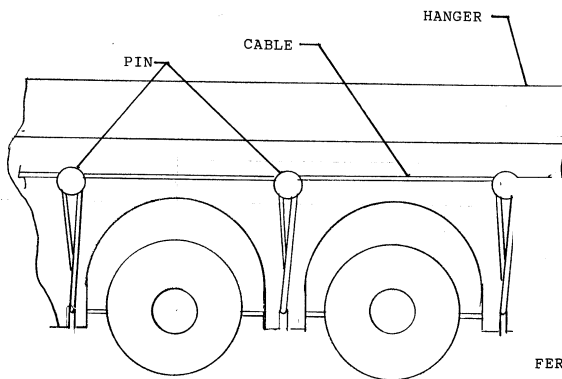
IF FURTHER ASSISTANCE IS REQUIRED PLEASE FEEL FREE TO CALL 1-800-548-4239

CHIME CABLE REPLACEMENT INSTRUCTIONS

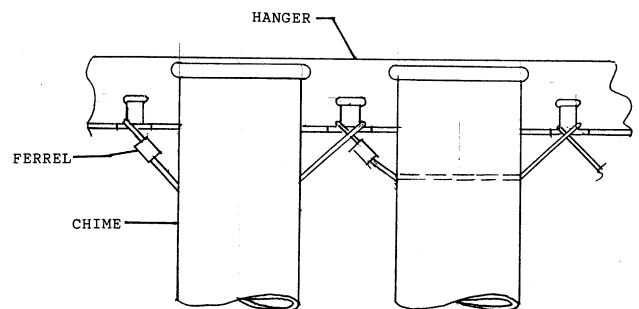
(Please read *all* of the instructions before starting)

TOOLS REQUIRED
- Slip Joint Pliers
- Side Cutter Pliers

1. Cut one piece of cable exactly 10 inches long.
2. Remove old cable from one chime tube and install tube in new frame at same location. While another person holds tube at correct height, thread the 10" long cable through the tube. Position cable in correct holding slot and pull tight. Note the length of overlap of cable. See drawing.
3. Cut cable 1/2 inch longer. See drawing. Note length (for cutting remaining cable).
4. Remove chime from frame and install cable and ferrule. Extend each end of cable approx. 1/16 inch past each end of ferrule. See drawing. With slip joint pliers crimp 1/2 of ferrule, with other side of pliers crimp the other end of ferrule. Crimp securely...but not too tight.



**TOP VIEW
CHIME INSTALLATION**



**FRONT VIEW
CHIME INSTALLATION**



If you make an error... do not panic, there is extra cable and ferrules provided.